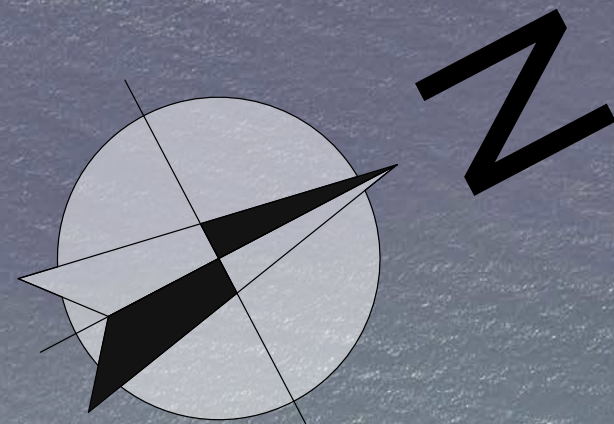


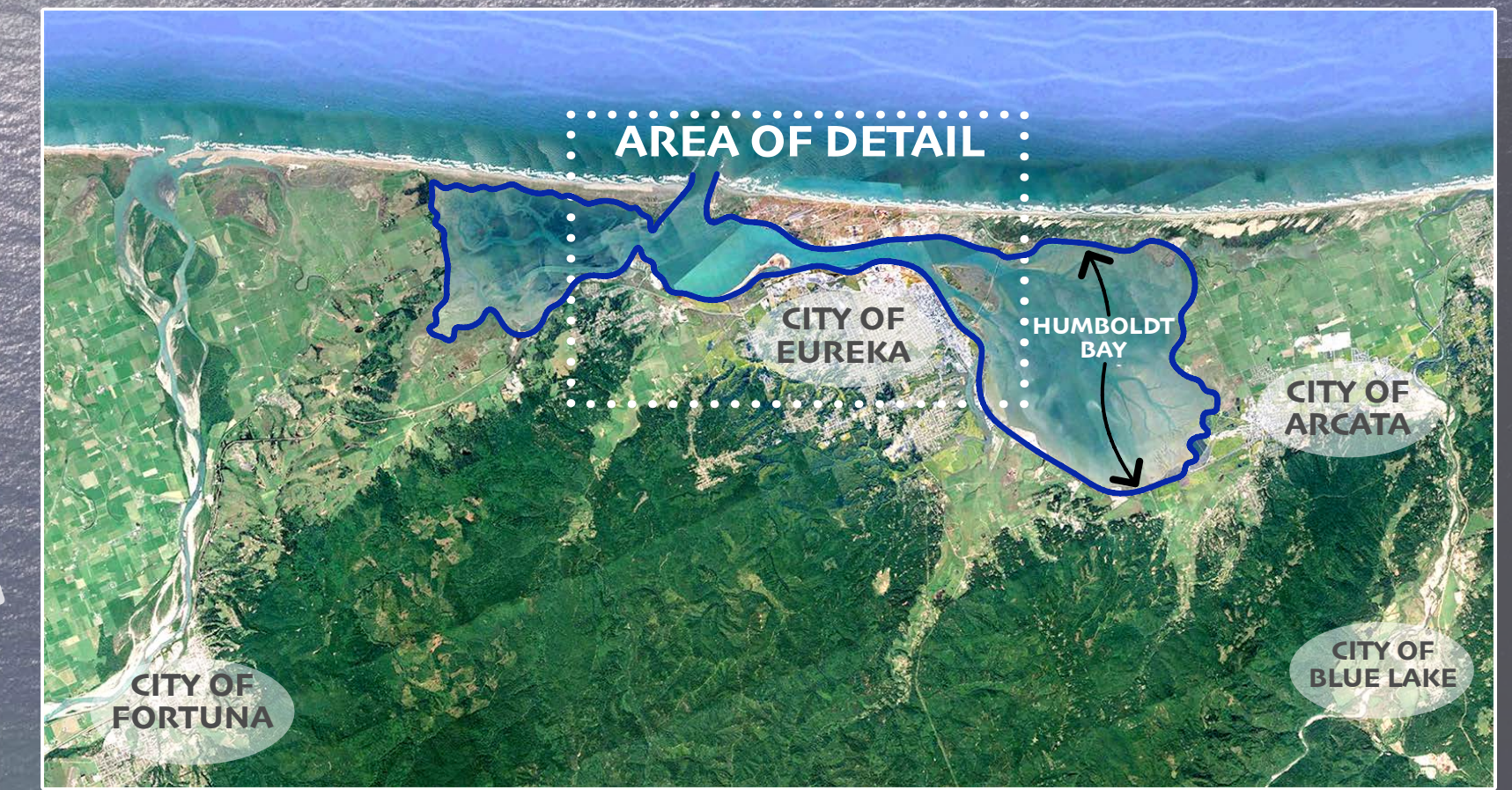
REUSE OF DOCUMENTS: This document and the ideas and design incorporated herein, as an instrument of professional service, is the property of JULIAN BERG DESIGNS and shall not be reused in whole or part for any other project without JULIAN BERG DESIGNS written authorization.

NOTE: THIS OVERVIEW PLAN AND THE IDEAS HEREIN ARE CONCEPTUAL IN NATURE AND ARE NOT INTENDED FOR PROJECT APPROVAL OR CONSTRUCTION. MORE DEVELOPED PLANS ARE TO BE BASED ON ACCURATE SURVEY AND BASE DATA INFORMATION.

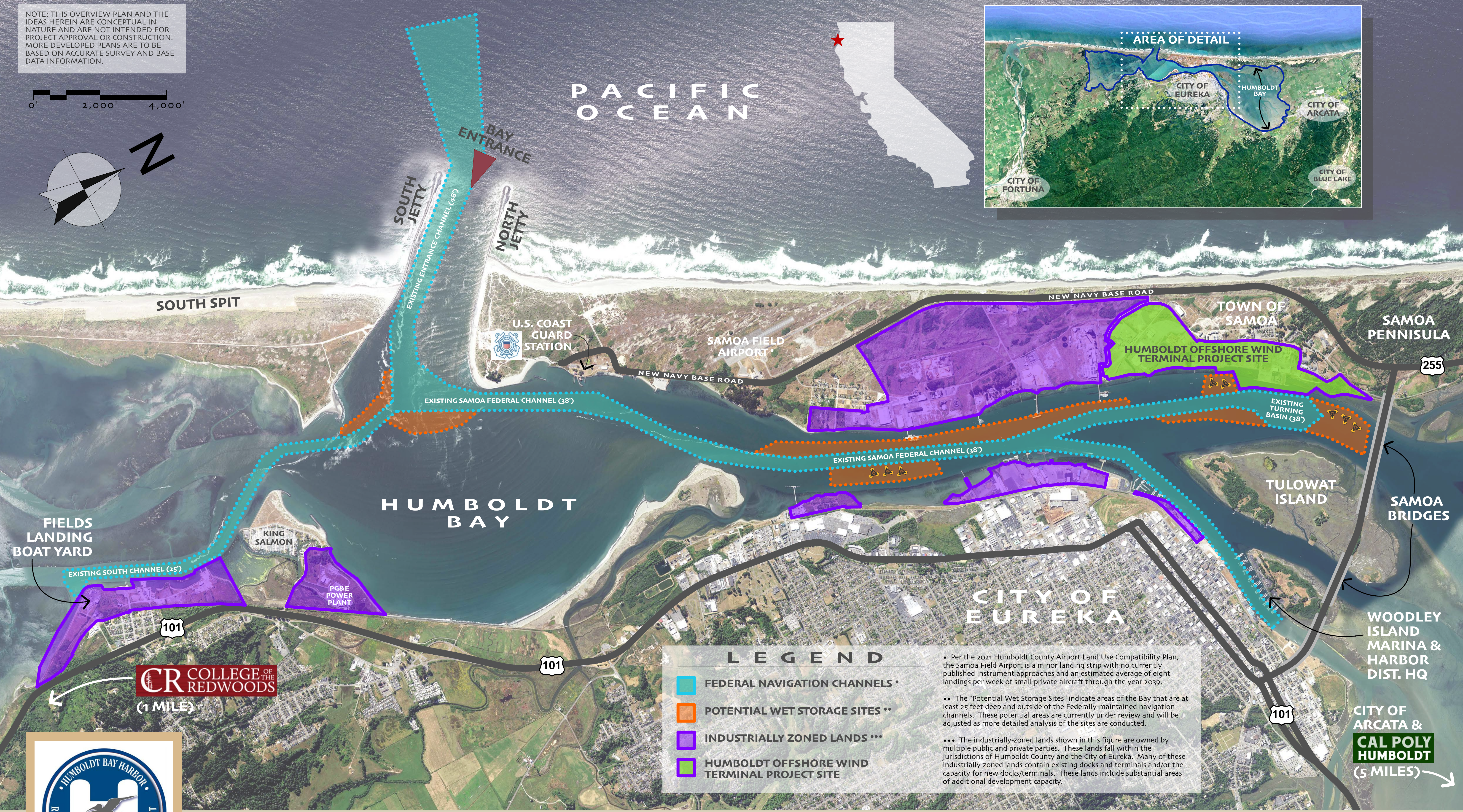
0' 2,000' 4,000'



KEY MAP



PACIFIC OCEAN



LEGEND

- FEDERAL NAVIGATION CHANNELS •
- POTENTIAL WET STORAGE SITES **
- INDUSTRIALLY ZONED LANDS ***
- HUMBOLDT OFFSHORE WIND TERMINAL PROJECT SITE

• Per the 2021 Humboldt County Airport Land Use Compatibility Plan, the Samoa Field Airport is a minor landing strip with no currently published instrument approaches and an estimated average of eight landings per week of small private aircraft through the year 2039.

** The "Potential Wet Storage Sites" indicate areas of the Bay that are at least 25 feet deep and outside of the Federally-maintained navigation channels. These potential areas are currently under review and will be adjusted as more detailed analysis of the sites are conducted.

*** The industrially-zoned lands shown in this figure are owned by multiple public and private parties. These lands fall within the jurisdictions of Humboldt County and the City of Eureka. Many of these industrially-zoned lands contain existing docks and terminals and/or the capacity for new docks/terminals. These lands include substantial areas of additional development capacity.

CR COLLEGE OF THE REDWOODS (1 MILE)



HUMBOLDT BAY OFFSHORE WIND & HEAVY LIFT MULTIPURPOSE MARINE TERMINAL OVERALL BAY VIEW

JULIAN BERG DESIGNS
ARCHITECTURE & PLANNING
julianbergdesigns.com
707 • 407 • 8870
6.5.22